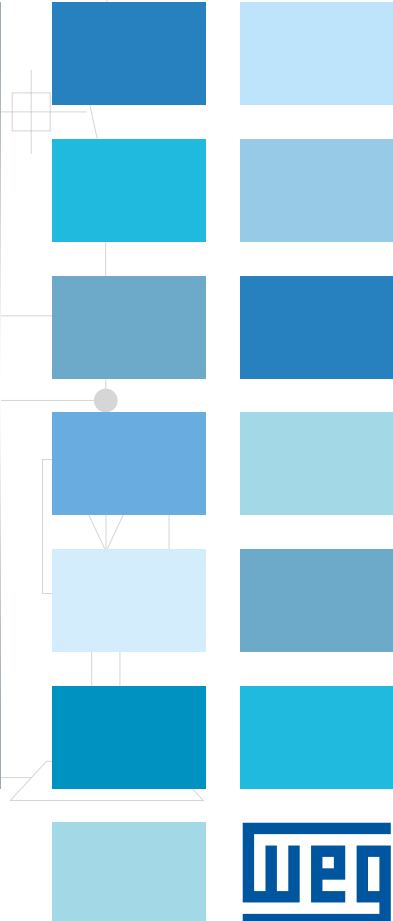
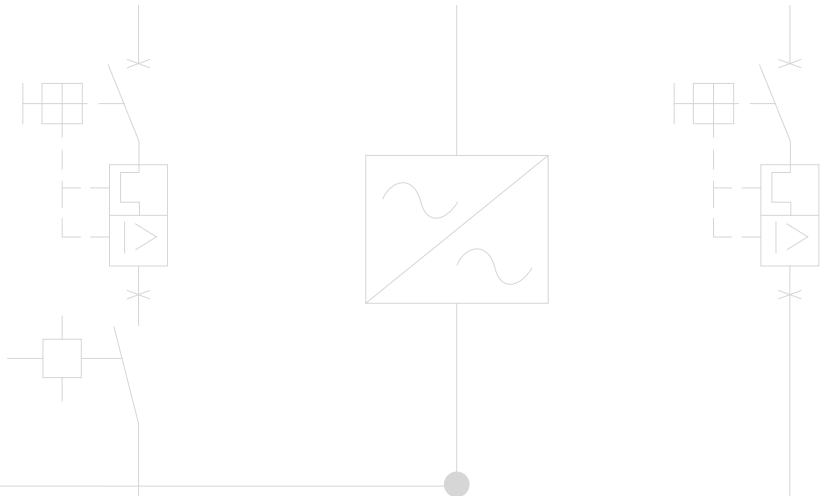


MVW3000

Medium Voltage Variable Speed Drive





WEG MVW3000 Variable Speed Drive (VSD)

Efficient, Reliable and Safe Motor Control
for a Wide Range of Industrial Applications

WEG introduces the new generation of Medium Voltage Variable Speed Drives **MVW3000**.

Friendly operator interface, identical to that of Low Voltage VSD product line, presents familiarity and ease of use.

MVW3000 is perfectly suitable for a variety of variable speed industrial applications such as compressors, pumps, fans, conveyors and grinding mills.

For new installations or revamps, MVW3000 offers robust solutions to optimize your process and save significantly on operating costs.

The MVW3000 is based on multi-level voltage source converter, using cascaded H-bridge (CHB) topology. The almost perfect sinusoidal output waveforms produced by the drive allows the use on applications with new or existing induction and synchronous motors.



- Efficiency
- Reliability
- Safety

Features

- Motor voltage: 2.3 kV, 3.3 kV, 4.16 kV, 5.5 kV, 6 kV, 6.3 kV, 6.6 kV, 6.9 kV, 7.2 kV and 8 kV¹⁾
 - Motor current: up to 200 Amps¹⁾
 - Input voltage: 2.3 kV...13.8 kV²⁾
 - Reliable air-cooled design
 - Total harmonics compliance with IEEE 519
-
- Complete panel integration provides quick and reliable commissioning and startup
 - High power factor (>0.95) throughout entire speed range without capacitors or filters
 - Outstanding input harmonic levels without harmonic filters (meets IEEE 519, IEC 61800-3, G5/4-1)
 - Reduced motor losses, vibrations, torque pulses and overheating due to near sinusoidal output voltage and current

Power cells designed with the well proven WEG technology with more than 30 years of experience in motor drives. Two options of power cells available: Electrolytic and Dry-type Capacitors to the best-fit application



Notes: 1) Higher voltage/current under request.
 2) Contact factory for voltages above 7.2 kV.

MVW3000 Integral VSD

Includes all components that are required for a MV VSD standard system design on a small footprint.



Standard Arrangement and Features

Approx. Dimensions 3,900 (W) x 2,210 (H) x 1,100 (D) (mm)

- Switchgear & transformer section: 1,800mm
- Power cells section: 1,500 mm
- Control & filter section: 600 mm

Input Switchgear

- Load break switch fuse with vacuum contactor - for up to 6.9 kV, 3 Ph, 60 Hz input
- Mechanical interlocking to prevent access to HV section until switch is in OFF position
- Bottom cable entry or top cable entry

Phase Shifting Transformer 18-Pulse as Standard

- With surge arresters on primary HV side
- Impedance matched secondary windings to minimize line side harmonics & reduce losses
- Winding temperature monitoring (Pt-100 in windings) available via 8 channel temperature monitor

Assembly Features

- Cable connection arrangement top entry/top exit or bottom entry/bottom exit
- Kirk-key locked enclosure sections for switchgear, transformer and VFD

Notes: 1) Dimensions for the standard product at voltages up to 6.9 kV and currents up to 140 A. Dimensions for higher ratings under request
 2) Existing or separate input switchgear can also be used.

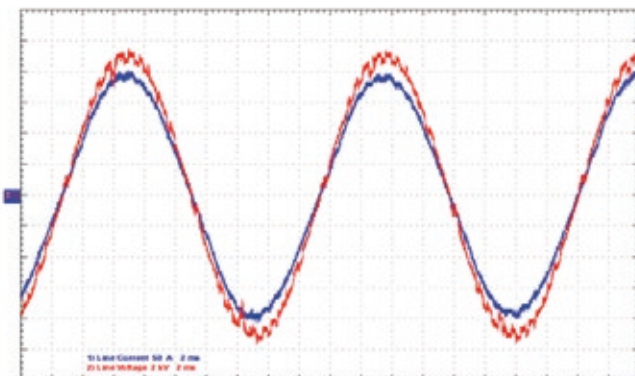
Specification Table

Product model	Rated voltage (V)	Output current (A) ¹⁾	Motor power reference	
			HP	kW
MVW3000 0040 T2300	2,300 V	40	150	132
MVW3000 0070 T2300		70	300	250
MVW3000 0100 T2300		100	450	355
MVW3000 0140 T2300		140	600	500
MVW3000 0200 T2300		200	900	710
MVW3000 0040 T3300	3,300 V	40	250	160
MVW3000 0070 T3300		70	450	355
MVW3000 0100 T3300		100	600	500
MVW3000 0140 T3300		140	900	710
MVW3000 0200 T3300		200	1,250	1,000
MVW3000 0040 T4160	4,160 V	40	300	200
MVW3000 0070 T4160		70	500	425
MVW3000 0100 T4160		100	800	600
MVW3000 0140 T4160		140	1,000	850
MVW3000 0200 T4160		200	1,500	1,120
MVW3000 0040 T5500	5,500 V	40	400	315
MVW3000 0070 T5500		70	700	560
MVW3000 0100 T5500		100	1,000	800
MVW3000 0140 T5500		140	1,500	1,120
MVW3000 0200 T5500		200	2,000	1,600
MVW3000 0040 T6300	6,000~6,300 V	40	450	355
MVW3000 0070 T6300		70	800	630
MVW3000 0100 T6300		100	1,000	900
MVW3000 0140 T6300		140	1,750	1,250
MVW3000 0200 T6300		200	2,250	1,800
MVW3000 0040 T6900	6,600~6,900 V	40	500	400
MVW3000 0070 T6900		70	900	710
MVW3000 0100 T6900		100	1,250	1,000
MVW3000 0140 T6900		140	1,750	1,400
MVW3000 0200 T6900		200	2,500	2,000
MVW3000 0040 T7200	7,200 V	40	500	400
MVW3000 0070 T7200		70	900	710
MVW3000 0100 T7200		100	1,250	1,000
MVW3000 0140 T7200		140	2,000	1,400
MVW3000 0200 T7200		200	2,500	2,000
MVW3000 0040 T8000	8,000 V	40	600	450
MVW3000 0070 T8000		70	1,000	800
MVW3000 0100 T8000		100	1,500	1,120
MVW3000 0140 T8000		140	2,000	1,600
MVW3000 0200 T8000		200	3,000	2,250

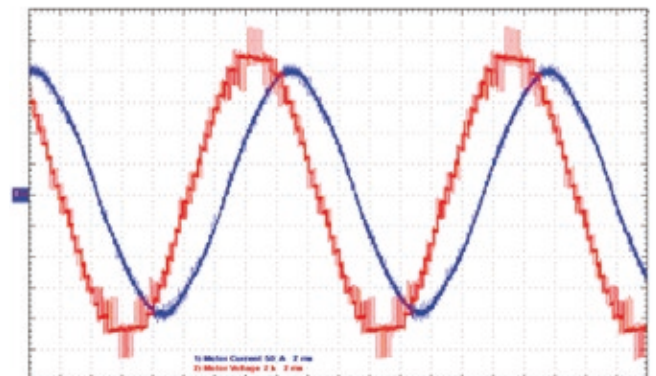
Notes: 1) Overload capacity: ND = Normal duty: 115% during 60 seconds.

Waveforms

Input Current and Input Voltage



Motor Current and Motor Voltage



WEG Worldwide Operations

ARGENTINA

San Francisco - Cordoba
Phone: +54 3564 421484
info-ar@weg.net

Cordoba - Cordoba
Phone: +54 351 4641366
weg-morbe@weg.com.ar

Buenos Aires
Phone: +54 11 42998000
ventas@pulverlux.com.ar

AUSTRALIA

Scoresby - Victoria
Phone: +61 3 97654600
info-au@weg.net

AUSTRIA

Markt Piesting - Wiener
Neustadt-Land
Phone: +43 2633 4040
watt@wattdrive.com

BELGIUM

Nivelles - Belgium
Phone: +32 67 888420
info-be@weg.net

BRAZIL

Jaraguá do Sul - Santa Catarina
Phone: +55 47 32764000
info-br@weg.net

CHILE

La Reina - Santiago
Phone: +56 2 27848900
info-cl@weg.net

CHINA

Nantong - Jiangsu
Phone: +86 513 85989333
info-cn@weg.net

Changzhou - Jiangsu
Phone: +86 519 88067692
info-cn@weg.net

COLOMBIA

San Cayetano - Bogota
Phone: +57 1 4160166
info-co@weg.net

ECUADOR

El Batan - Quito
Phone: +593 2 5144339
ceccato@weg.net

FRANCE

Saint-Quentin-Fallavier - Isère
Phone: +33 4 74991135
info-fr@weg.net

GERMANY

Türnich - Kerpen
Phone: +49 2237 92910
info-de@weg.net

Balingen - Baden-Württemberg
Phone: +49 7433 90410
info@weg-antriebe.de

Homburg (Efze) - Hesse
Phone: +49 5681 99520
info@akh-antriebstechnik.de

GHANA

Accra
Phone: +233 30 2766490
info@zestghana.com.gh

INDIA

Bangalore - Karnataka
Phone: +91 80 41282007
info-in@weg.net

Hosur - Tamil Nadu
Phone: +91 4344 301577
info-in@weg.net

ITALY

Cinisello Balsamo - Milano
Phone: +39 2 61293535
info-it@weg.net

JAPAN

Yokohama - Kanagawa
Phone: +81 45 5503030
info-jp@weg.net

MALAYSIA

Shah Alam - Selangor
Phone: +60 3 78591626
info@wattdrive.com.my

MEXICO

Huehuetoca - Mexico
Phone: +52 55 53214275
info-mx@weg.net

Tizayuca - Hidalgo
Phone: +52 77 97963790

NETHERLANDS

Oldenzaal - Overijssel
Phone: +31 541 571080
info-nl@weg.net

PERU

La Victoria - Lima
Phone: +51 1 2097600
info-pe@weg.net

PORTUGAL

Maia - Porto
Phone: +351 22 9477700
info-pt@weg.net

RUSSIA and CIS

Saint Petersburg
Phone: +7 812 363 2172
sales-wes@weg.net

SOUTH AFRICA

Johannesburg
Phone: +27 11 7236000
info@zest.co.za

SPAIN

Coslada - Madrid
Phone: +34 91 6553008
wegiberia@wegiberia.es

SINGAPORE

Singapore
Phone: +65 68589081
info-sg@weg.net

Singapore
Phone: +65 68622220
watteuro@watteuro.com.sg

SCANDINAVIA

Mölnlycke - Sweden
Phone: +46 31 888000
info-se@weg.net

UK

Redditch - Worcestershire
Phone: +44 1527 513800
info-uk@weg.net

UNITED ARAB EMIRATES

Jebel Ali - Dubai
Phone: +971 4 8130800
info-ae@weg.net

USA

Duluth - Georgia
Phone: +1 678 2492000
info-us@weg.net

Minneapolis - Minnesota
Phone: +1 612 3788000

VENEZUELA

Valencia - Carabobo
Phone: +58 241 8210582
info-ve@weg.net

For those countries where there is not a WEG own operation, find our local distributor at www.weg.net.



WEG Group - Automation Business Unit
Jaraguá do Sul - SC - Brazil
Phone: +55 47 3276 4000
automacao@weg.net
www.weg.net

